

PULLMAN

The magazine of the Pullman Gallery

Issue No. 27



Picture this: detail of the allegorical study *Service in Nature*, the impressive painting, once a prominent fixture in Philadelphia's leading department store, Wanamaker's. (See pages 14 and 15).

The World according to Pullman

Private enthusiasms and tastes are always interesting, and it is an intriguing fact that collecting is a singular business whose only rules are those made up by ourselves, for ourselves. While it is customary to buy principally for love of the object, rather than profit, or to follow fashion, the paradox is that so often what we buy turns out to have been a very happy investment.

A case in point is the wonderful variety of poster art, illustrated profusely on these pages: of high interest and quality, and receiving deserved attention among collectors. Two of the finest early examples, both remarkably over 100 years old, from the Heroic Age of motor sport, feature within. No less remarkable, and continuing the automotive theme, is John Elwell's flawlessly executed and unique model of Alfa Romeo's celebrated 1938 *Tipo 308* Grand Prix racing car, and René Lalique's especially beautiful *Victoire* glass *bouchon de radiateur*, created in 1926.

The equine element is strongly represented by Herbert Haseltine's spectacular 1914 bronze rendering of a thoroughbred race horse, one of the most important equestrian works of the last century; and Armand Lemo's high *Art Deco* Archer and Horse, modelled to powerful effect.

Well shown also in this issue are two magnificently covetable Sterling silver *Art Deco* pieces by Cartier - a large photograph frame with built-in timepiece and an equally impressive *lapis* and gold mounted cigar box, both unique - and an exquisite example of a 1920s Louis Vuitton 'Flower Trunk'. These rarely seen miniatures are as sought-after as anything yet to come from the luxury maker, and this particular trunk a truly rare rediscovery, as a result of our last example's appearance in issue 25. Of equal interest, is a grand Victorian glass whisky fountain, a statue of the wily Corsican, Napoléon Bonaparte, and, of course, an engaging line-up of cocktail shakers, redolent of the golden age of cocktail culture.

A superb line-up from our collection of classic cigar and smoking accessories are pictured, completely at home in Annabel's of course. And touched by history is a Sterling silver cigar cutter from the estate of former Luftwaffe chief Hermann Goering. To complete the picture, our cover portrays a compelling image: an enlightened *Art Deco*-influenced allegory that once delighted visitors to Wanamaker's, Philadelphia's smartest department store. And Carl Kauba, pre-eminent exponent of Austrian statuary, delights us with his impressive skeletal bronze. A reminder that variety rewards the curious...

Until next time

Simon Khachadourian

MARK BIRLEY (1930-2007) AN APPRECIATION

PULLMAN has lost one of its readers, and the gallery one of its original clients. Mark's eloquence and support in describing our newly-opened King Street gallery in 1998 as a '*pocket of resistance in a world of mediocrity*' was generous praise, especially valued. I will miss his urbanity, wit and wisdom greatly.

Simon Khachadourian

14 KING STREET
ST JAMES'S
LONDON SW1Y 6QU

116 MOUNT STREET
MAYFAIR
LONDON W1K 2NH

TELEPHONE: (+44) 020 7930 9595

Email: sk@pullmangallery.com Website: www.pullmangallery.com

A Touch of Glass

English style: (left to right) unusual glass decanter by Asprey and Co; of distinctive 'pinched' design, silver mounting to the neck, with heavy glass ball stopper, hallmarked ASPREY LONDON 1926, height: 28 cm (11") **Ref 2908**; a superior Sterling silver and glass decanter of triangular form, with rounded shoulders, silver-mounted collar, and extended handle; body etched with registration number, hallmarked Thomas Smily, London 1887, height: 32 cm (13") **Ref 1749**; a select magnum-sized wine decanter in the shape of a Champagne magnum, Sterling silver neck and hinged cap in the form of a cork, with glass stopper beneath. Hallmarked Pullman Editions, London 2003, height: 38 cm (15") **Ref 1736**.



Thirst quenchers: no edition of PULLMAN magazine would be complete without a variety of cocktail shakers from our unmatched gallery collection (from left): aesthetic and functional appeal combine in a stylish Amethyst glass cocktail shaker, finished with decorative Sterling silver overlay capturing a Venetian scene typical of 'The City of Water', Italian, c.1950, height: 23 cm (9") **Ref 3150**; a very high quality 1920s glass and enamel cocktail shaker in Modernist style by Bohemian master Karl Palda (1888-1938). Interestingly, the former Czech Republic was a renowned centre for 'luxury class' glassmaking during the Art Deco period, height: 25 cm (10") **Ref 3161**; novel green glass 'Thirst Extinguisher' shaker in the shape of a period English Fire Brigade extinguisher. American, c.1930, height: 29 cm (11") **Ref 3165**; infinitely appealing black onyx shaker, with decorative Sterling silver overlay, and featuring a stag and deer theme set within an overlaid foliate border. American, c.1930, height: 28 cm (11") **Ref 2752**.

Top Tank



Detail of cigarette box open

Making Tracks: (front) incomparably the best example of a Sterling silver cigarette box by Carrington & Co, modelled on the MkIV tank that made history at Messines during the Great War. The tank shell and tracks finely detailed and finished to scale; the stylised turret - when raised - reveals a cedar-wood lined interior. The smartest regiments in the British Army deposited their mess silver in the Regent Street vaults of the revered Royal silversmiths. Hallmarked Carrington & Co, London, 1929. Length overall: 18 cm (7") **Ref 3148**; (rear) charmingly evocative example of a rare Cocktail Set in the shape of a First World War MkIV tank. The shaker centrally placed, with cap and pouring spout doubling as 'turret and cannon', and six shot cups set fore and aft as 'armour'. Made by Regent of London, c.1920. Literature: *The Cocktail Shaker*, Simon Khachadourian, 2000. Length overall: 25 cm (10") **Ref 1089**.



Name Dropper: water your hedge fund with this particularly appealing Sterling silver gilt Vermouth dropper, modelled on a watering can, by Cartier. Quality has long been the calling card of the much respected French luxury maker and this fine 1930s gift, signed *Cartier*, is no exception. Height: 8 cm (3") **Ref 3069**.



"Windsor": a massive and imposing Sterling silver cocktail shaker inspired by the architecture of Windsor Castle. Manufactured in a limited edition of 50 signed and numbered pieces, Pullman Editions designed these shakers in 2002, as a commemoration of the Queen's Golden Jubilee. Height: 45 cm (18") **Ref 1272**.

Whisky Galore



The perfect bar companion in the form of a grand Victorian whisky fountain (capacity: 12 bottles!), the glass inscribed with the gilded legend *FINEST OLD SCOTCH WHISKY, WRIGHT AND GREIG LTD, GLASGOW* and bearing the maker's mark *J.A.COX, SOHO, LONDON WI*. The circular foot is supported on a highly polished flame mahogany base and the fountain fitted with a brass tap, ceramic drip-bucket and removable glass cover.

Height overall: 79 cm (31") Ref 3098.

Pet Subjects

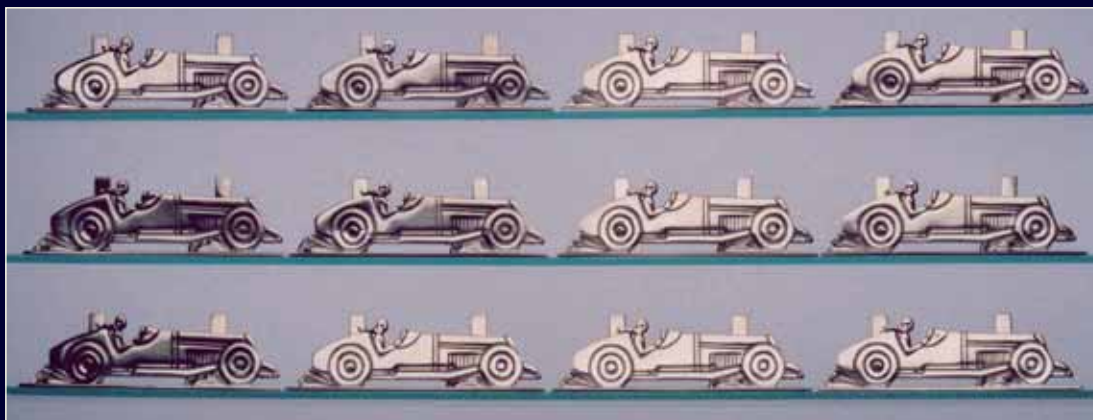


Pug shot: a line up of Victorian-era softwood tobacconist's humidors, each shaped to resemble the features of a short-snouted Pug, with eyes inset, and replicated carved collar and buckle; the hinged head revealing a void for cigars, the middle version featuring a silver lined interior. Bred to adorn the laps of ancient Chinese emperors, the Pug (the name derived from *pugnus* - 'fist' in Latin) was a popular 19th Century Toy breed, favoured by Queen Victoria. Height of each: 35 cm (14"). (Left to right), Ref 3106, Ref 3074 and Ref 3107.



Variations on a theme: (left to right) No two lighters in Alfred Dunhill's 'Aquarium' series were the same, and this particular example, featuring a genial owl and smaller birds pictured in a rural idyll, is one of the rarest Ref 3152; continuing on an equine theme in this unique Hunting field-inspired lighter, the pack of foxhounds and rider captured in common pursuit Ref 2715; distinctive wildfowl motif to the fore in this unique aviary-themed 'Service' size lighter Ref 2646; finally a table version depicting the racehorse 'Royal Maid' romping home in the Chesterfield Cup at Glorious Goodwood, 1955 Ref 2794.

All Dunhill Aquariums are rare and unique - hand-painted by Ben Shillingford in the decade 1949-1959, no two are the same. The vast majority, of course depict marine life in one form or another, and it is Shillingford's *NON*-aquatic lighters that are the most coveted of all, and invariably were special commissions. We are proud to offer no less than four of these non-aquatic Aquariums, including one exceptionally rare 'Service' size. In perfect working order, superb condition, and rare in the extreme.



The fast set: hold all the cards with a fine set of twelve Sterling silver Art Deco place card holders in the form of stylised racing cars by Hermès. Today, totally original and complete sets in perfect condition, such as the example illustrated, are increasingly hard to find. Hallmarked and signed *Hermès Paris*. Length: 10 cm (4") Ref 3155.

Pullman Variety

A cut above: a cigar cutter of significant proportion, Wild Boar's tusk prominent, with Sterling silver mounting and finely engraved thumb-piece bearing the Coat of Arms of *Reichsmarschall* Hermann Wilhelm Goering (1893-1946). The historic cutter, dating from 1930s Germany and hallmarked 925, is of impeccable provenance: the property of the last leader of Manfred von Richthofen's World War One air squadron, second-in-command of the National Socialist Party, and chief of the *Luftwaffe*. Hermann Goering achieved the unique rank of *Reichsmarschall* in 1940. The supreme title, he claimed, demanded a 'fashionable' crest and personal standard, and the retention of his own standard bearer. Length: 25 cm (9") **Ref 3075**.



Detail: Goering's crest on thumb piece



Booked-up: a quartet of stylish Sterling silver cigar boxes in simulated book form. The Crichton cigarillo case, formerly the property of the 1st Duke of Kent, and hallmarked 1914, rests on three Sterling silver cigar boxes by Tiffany, the ultimate in all-American luxury. The largest 'volume' features a Statue of Liberty motif to the front 'cover', American c.1940s, length of each, from top: 9 cm (3.5") **Ref 1448**, 14 cm (5.5") **Ref 1506**, 19 cm (7.5") **Ref 1381**, and 30 cm (12") **Ref 1579**.

Get Cartier!



Detail of case



Frame-up: a very special Cartier Sterling silver photograph frame of significant proportions, fully assimilating the *Art Deco* influence. The sizeable frame bordered with 18ct gold 'screw' detail, arched top incorporating a signed Cartier eight-day, Swiss-made timepiece. The fitted red leather case by Cartier and clock key are both original, and iconic Hollywood legend Cary Grant (Bristol-born Archie Leach) completes the picture. French c.1935.

Height overall: 50 cm (20") Ref 3172.



Detail of box with original Cartier case



Breathtakingly elegant *Art Deco* Sterling Silver cigar box of rectangular form, the distinctive horizontally reeded design featuring two similar vertical bands and gold and *lapis-lazuli* thumb-piece, cedar-lined to the interior, with gilded inside lid, inscribed *CARTIER-PARIS-LONDON-NEW YORK* and *MADE IN FRANCE* to the rim with English import marks, 1929. Presented in original red leather fitted Cartier case, length overall: 25 cm (10") **Ref 3102.**

Sterling area: a sizeable Sterling silver ashtray, using references from the *Art Deco* period, complete with four wide cigar rests. Marked *Tiffany & Co.* Diameter: 12 cm (5") **Ref 3154.**

Bronze Age

Pigeon fancier: *The Carrier Pigeon*, dating from the 1920s, is a supreme example of the work of renowned Italian sculptor Amadeo Gennarelli (1880-1939). The sensual nude figure, striking an uninhibited pose, holds the bird aloft, anticipating flight. The fine bronze, signed by the artist, bears a prominent circular French foundry mark. Neapolitan Amadeo Gennarelli first exhibited at the 1913 *Salon des Beaux Arts* in Paris, and is today widely acknowledged as one of the leading *Art Deco* sculptors. Literature: *Art Deco and Other Figures*, Bryan Catley (1978). Height overall: 46 cm (18") **Ref 3105.**

Riding high: 20th Century Decorative in the form of a striking *Art Deco*-influenced equestrian bronze. The stylised archer and his rearing horse powerfully modelled by foremost French sculptor Armand Lemo (1881-1936). Height: 52 cm (21") **Ref 3104.**



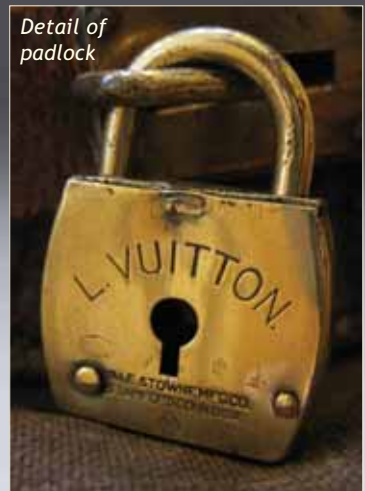
The Taste of Luxury

To have and to hold: exquisite example of miniature Louis Vuitton in the form of a rare 1920s 'Flower Trunk'. LV *Monogramme* prominent, lock signed Louis Vuitton. Complete with leather carrying handles. **Length: 28 cm (11") Ref 3174.**

The inimitable Gallic allure of the 'Flower Trunk' was further enhanced by exclusiveness: never produced for sale, the trunks, produced in tiny numbers between 1913 and 1925, were offered only to favoured clients with the aim of publicising the distinctive LV *Monogramme* (first introduced in 1897). The trunks, zinc-lined and water-resistant, and ideal for carrying freshly-cut flowers, could be returned to Vuitton to be refitted as jewellery and trinket cases, or cigarette boxes. *Literature: Louis Vuitton: The Birth of Modern Luxury, Paul-Gerard Pasols (2005) Ref 2956.*



In the bag: a very special turn-of-the-last-century 'Steamer' bag by Louis Vuitton. One of the earliest, and rarest examples, made in plain brown canvas, before the design was succeeded by the customary LV *Monogramme* in 1904. The canvas bag, trimmed in leather, is offered with the maker's original padlock and key. Date: 1900. Vuitton's enduring design, still catalogued, was modelled on the original 19th Century U.S. Mail bag. Length: 66 cm (26") **Ref 3159.**



Money Spinner



When the chips are down: excellent set of early 20th Century bakelite gaming chips, with inlaid mahogany carousel and brass carrying handle, complete with four slots for decks of cards. American c.1900. Diameter: 36 cm (14") **Ref 3170.**



Salad days: a stylish pair of Edwardian Sterling silver and shagreened salad servers by Asprey of London. Hallmarked 1905. Stamped **ASPREY LONDON**. Length: 23 cm (9") **Ref 3080.**

Luxury Issues

Style counts: the ultimate smoker's companion in the form of a beautifully finished 1940s humidor by pre-eminent Parisian designer Paul Dupré Lafon for *Hermès*. Hand-stitched leather to the top, and base, signed *HERMÈS PARIS*. Size: 30 cm (12") square. **Ref 3079**; shown below with a fine burl-patterned, hardwood cigar humidor by *Hermès Ref 3073*.



Alongside the legendary and slightly earlier Ruhlmann, Paul Dupré Lafon is the most sought after designer of the mid-20th Century. Known as the '*Decorateur des Millionnaires*', Dupré Lafon's work was (and still is) highly prized, and highly priced - a coffee table (magnificent, naturally) achieved €280,000 (£200,000 or \$400,000) at auction in 2006.



Humidors open

Face value: intriguing Art Deco silver and silver gilt combined powder compact and lipstick - the reeded case opened by removing the lipstick holder. Complete with original suede wallet. Signed *Hermès Paris*. c.1940. Length overall: 8 cm (3") **Ref 3068**.



Detail of compact closed

Timeless appeal: a superb silvered bronze eight-day travelling clock of the Art Deco period by *Hermès*, the tank-shaped body fitting like a glove into a protective outer case. Signed *Hermès Huit Jours*. c.1950. Height overall: 10 cm (4") **Ref 2840**.

Detail of clock closed



A Store is Born



Service in Nature: a unique, specially commissioned painting, an allegory taking for its central theme, the sustaining influences of nature, and invoking the solid virtues of the founder of Philadelphia's first modern-day department store. The inscription above the panel reads: *'FROM THE AIR, FROM THE SEA, AND FROM THE EARTH, MAN DRAWS THE THINGS THAT SUFFICE HIS NEEDS. THE SERVICE NATURE RENDERS MAN HAS INSPIRED HIM TO SERVE HIS FELLOW BEING. AND IN SO DOING HE HAS GAINED A NEWER AND BETTER CONCEPTION OF LIFE'*. The panel dates from 1933, when it was installed on the spacious men's clothing and accessories floor of Wanamaker's Philadelphia department store (see opposite). John Wanamaker, one of the most assiduous and instinctive retailers of his generation, hired top Chicago architect Daniel H. Burnham to build a lavish shopping Mecca in Florentine style, spanning 12 floors and including numerous galleries.

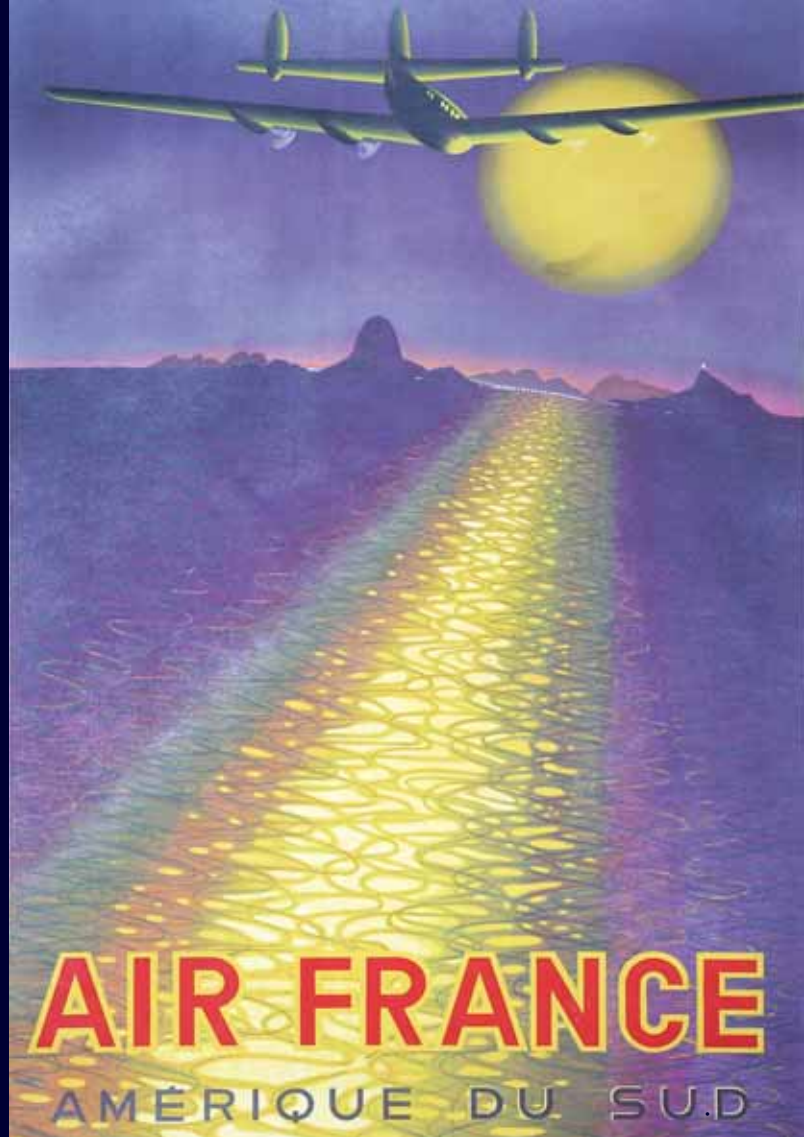


Wanamaker's, once a Philadelphia institution, was taken over, after many vicissitudes, by Hecht's (now Macy's) in 1995, and the remaining Wanamaker archive preserved by the Historical Society of Pennsylvania. Oil on canvas, monogrammed E.S. American, 1933. **Dimensions: 120 x 200 cm (48" x 78") Ref 3167.**



Original press photos of 'Service in Nature', as installed in Wanamaker's in 1933.

The Blue Horizon

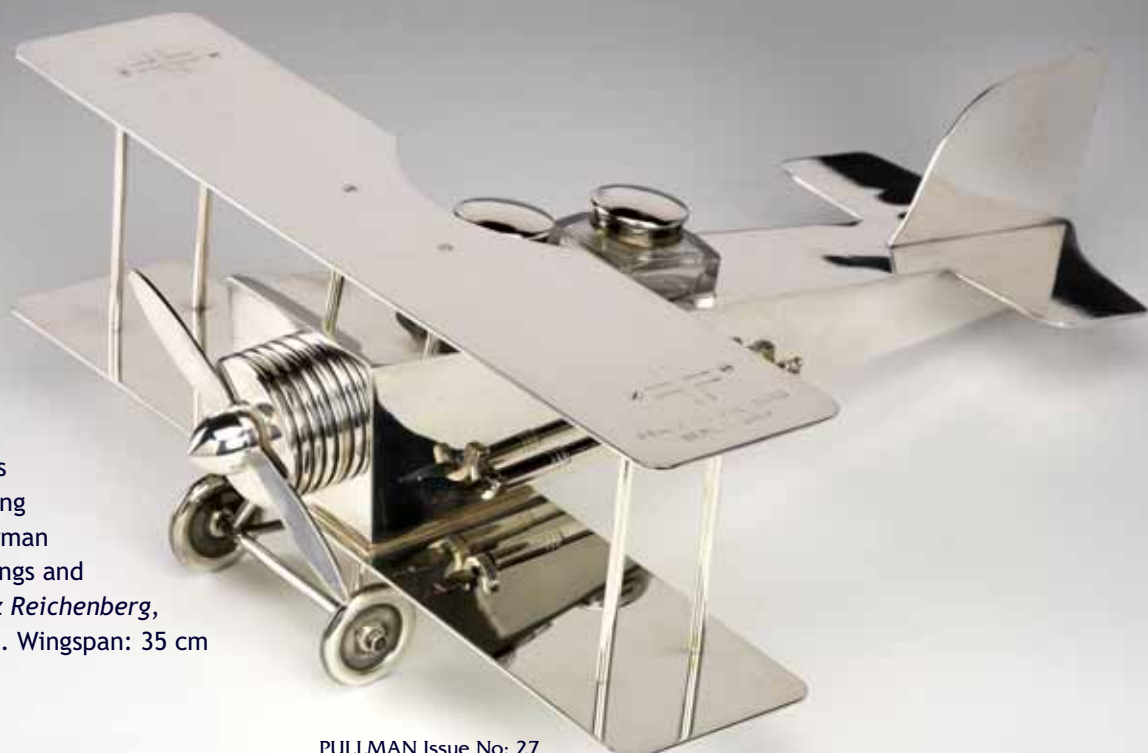


Global: (above left, front) an enamelled and silvered terrestrial globe, bearing the legend *AIR FRANCE de RESEAU AERIEN MONDIAL*, forms the centre-piece of this unusual desk-piece, with a cast-aluminium model of a stylised passenger airliner in flight above. Mounted on a square aluminium foot and marble base. French c.1950. Height: 18 cm (7") **Ref 3149**; (rear) **'Connie'**: novel American civil aviation desk-piece featuring a cast-aluminium model of Lockheed's finest: the triple-tail Super Constellation airliner, affectionately known as **'Connie'**, set above a terrestrial globe mounted on an aluminium-turned stand, c.1950. Height: 30 cm (12") **Ref 3099**; (top right) **'Air France - Amerique du Sud'**: rare, original poster, linen-mounted. Dimensions: 100 x 70 cm (40" x 28") **Ref 3143**.

Making it

Plane:

an outstanding and substantial desk companion in the form of a stylised First World War bi-Plane. The fuselage 'cockpits' with pair of glass and silver-plated inkwells and fountain pen and retaining hooks to one side, with rotating propeller and WW1 German airforce markings to wings and tail plane, signed *Franz Reichenberg*, Berlin. German c.1920s. Wingspan: 35 cm (14") **Ref 3156**.



Class Act



Deck detail



Splendour in the Class: extremely desirable Sterling silver model of a classic *J Class* racing yacht, thought to represent Sir Thomas Sopwith's acclaimed *Endeavour*, commissioned in 1934. Close attention to detail is outstanding: full sail, rigging and deck hatches are all meticulously detailed. A bevelled mirrored plinth adds distinction, and the whole is mounted on a black lacquer display base. The big ocean-going yachts, instantly appreciated in their heyday, recall a vanished age, and the sheer presence of the fabled *J Class* lives on. Hallmarked London 1937.

Height: 66 cm (26")

Ref 2016.



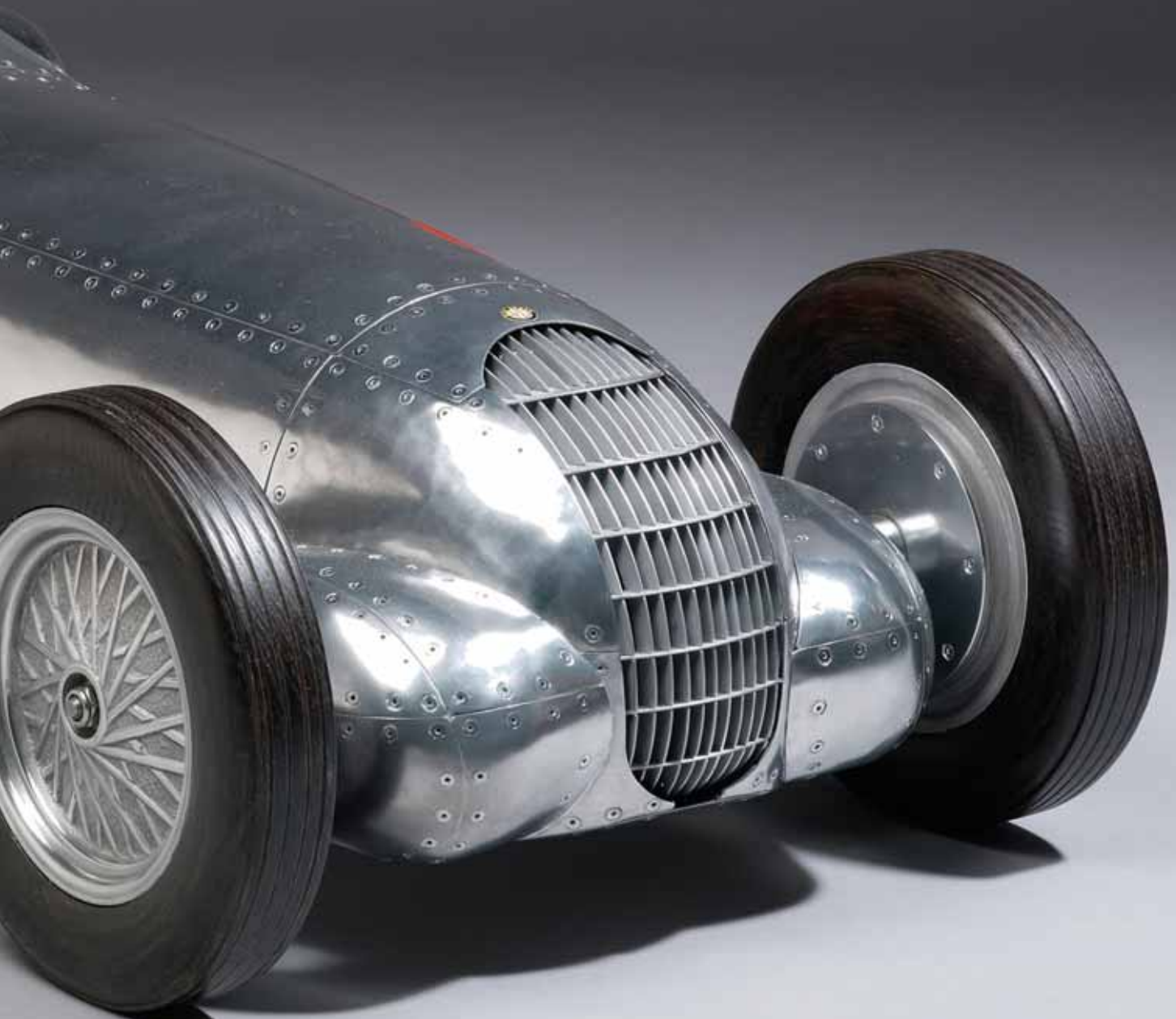
Unique: John Elwell's highly accomplished and unique rendering of Alfa Romeo's beautiful 1938 Tipo 308 Grand Prix racing car. A one-of-a-kind, bespoke commission, modelled with faultless attention to detail, and characteristically finished in riveted aluminium over a space frame. Mounted on a hardwood plinth (not shown), signed and numbered 1/1, dated 2007. **Length: 105 cm (42") Ref 3158.**

The Colombo-designed 308, built for the 1938 season, is considered the most beautiful single seat racing car ever made, and only four examples were ever constructed. The 308 made its debut at the Grand Prix at Pau, and Nuvolari, Sommer, Villoresi and Varzi - aces all - were among a distinguished roll-call of drivers who campaigned the straight-eight Alfa.

Front detail



Rear detail



Glass Distinction



VICTOIRE: a strikingly dramatic *bouchon de radiateur* by certified master of the art René Lalique (1860-1945). One of the most significant influences on glass design in the 20th Century, his skilled and imaginative car mascots are unquestionably among the most important, and covetable, contributions to his *oeuvre*. French, c.1926. Length: 25.4 cm (10"). Lalique at his best **Ref 3174**.



The glory of the green: a unique, one-off Sterling silver Bentley Winged 'B' mascot, specially commissioned in 1994 by a leading Bentley collector to celebrate the 75th anniversary of the founding of the *marque* in 1919 by Walter Owen Bentley. A classic design, the Winged 'B' was used on Vintage Speed Six models of the 1920s. 'W.O.'s' exclusive and expensive sports cars - and the 'Bentley Boys' who drove them - achieved considerable celebrity in their heyday. Hallmarked London 1994 **Ref 3157**.



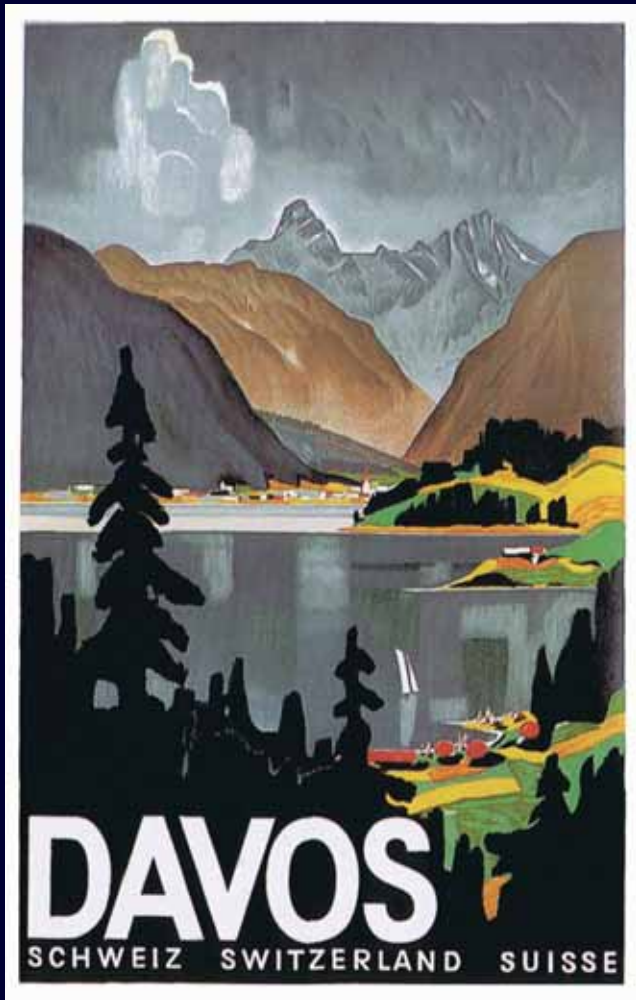
The ski's not the limit: rare enamelled and chrome member's car badge for the elite St. Moritz Toboggan Club. The Cresta Run remains Winter Sports most daring pursuit, far more challenging than a bobsled run, and running high risks of a spill during the fearsome descent. The club was founded under British influence in 1885, and its recent secretary, the late Colonel Digby Willoughby, was celebrated for his infamous pre-race 'Death Talks' to daredevil downhill racers. Swiss, c.1950. Height: 10 cm (4") **Ref 3128**.



'Cassandre', (Adolphe Mouron, 1901 - 1968), 'Italy - The Ideal Land for all Sports', original poster dated 1933. Dimensions: 100 x 66 cm (40" x 26") Ref 3109.



Jean Gabriel Domergue: 'Monte-Carlo', original poster, linen mounted, dated 1955. Dimensions: 100 x 60 cm (40" x 24") Ref 3133.



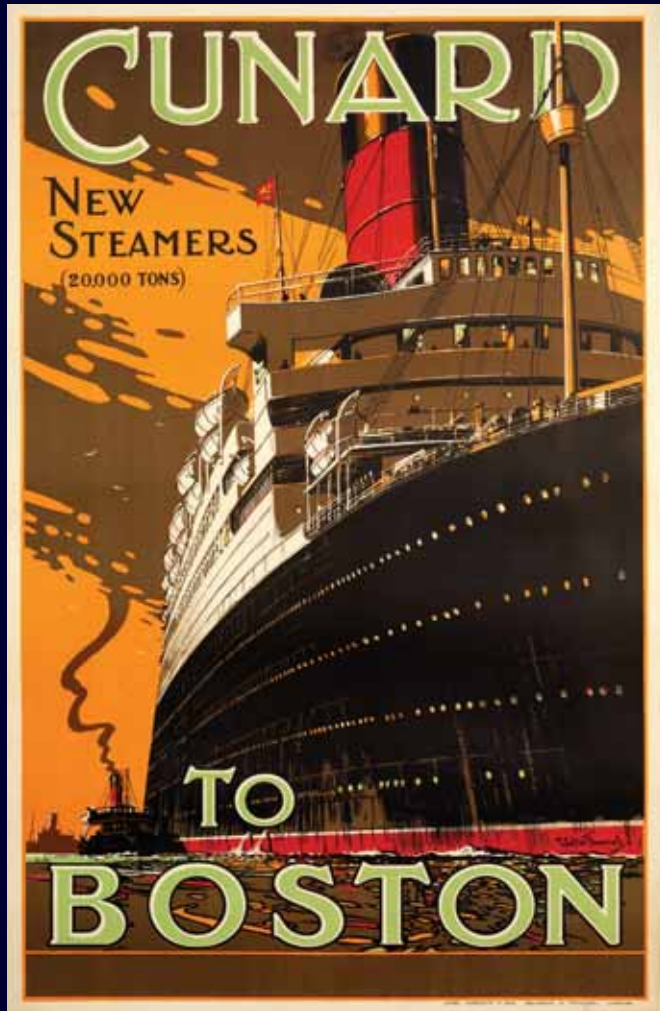
Anonymous: 'Davos', original poster, mounted framed and glazed. Dimensions: 127 x 89 cm (50" x 35") Ref 3129.



Lucien Peri: 'Cannes Côte d'Azur', original poster, linen mounted. Dimensions: 100 x 66 cm (40" x 26") Ref 3111.



Odin Rosenvinge (1880-1957): 'Cunard Line, Aquitania', original poster, linen mounted, dated 1914. Dimensions: 102 x 64 cm (40" x 25") Ref 3134.



Walter Thomas (1894-1971): 'Cunard to Boston', original poster, linen mounted. Dimensions: 102 x 67 cm (40" x 26") Ref 3135.



A. Ritscher: 'US Lines Bremen - New York', original poster dated 1934. Linen mounted, framed and glazed. Dimensions: 125 x 99 cm (49" x 39") Ref 3131.



Walter Thomas (1894-1971): 'Cunard White Star, Queen Elizabeth', original poster, linen mounted. Dimensions: 98 x 59 cm (38" x 23") Ref 3136.

Pushing the Boat Out



Anonymous: 'Abbazia Sport Woche 1912', original poster, linen mounted dated 1912. Dimensions: 100 x 70 cm (39" x 28") Ref 3119.



Percival Pernet: 'Championnat du Monde, 1946, Genève', original poster, linen mounted. Dimensions: 105 x 70 cm (41" x 28") Ref 3114.

Rear detail



Typhoon alert: a stylish, large-scale mahogany model of 'Typhoon', the high-powered racing motorboat built to the order of Henry Ford's son Edsel in 1929. 'Typhoon' was designed by respected US boat builder George Crouch, the vessel a copy of his record-breaking 'Teaser'. Howard Hughes later acquired 'Typhoon' from Ford, the craft finally lost in a fire in 1969. American, late 20th Century. Length overall: 85 cm (34") Ref 3171.





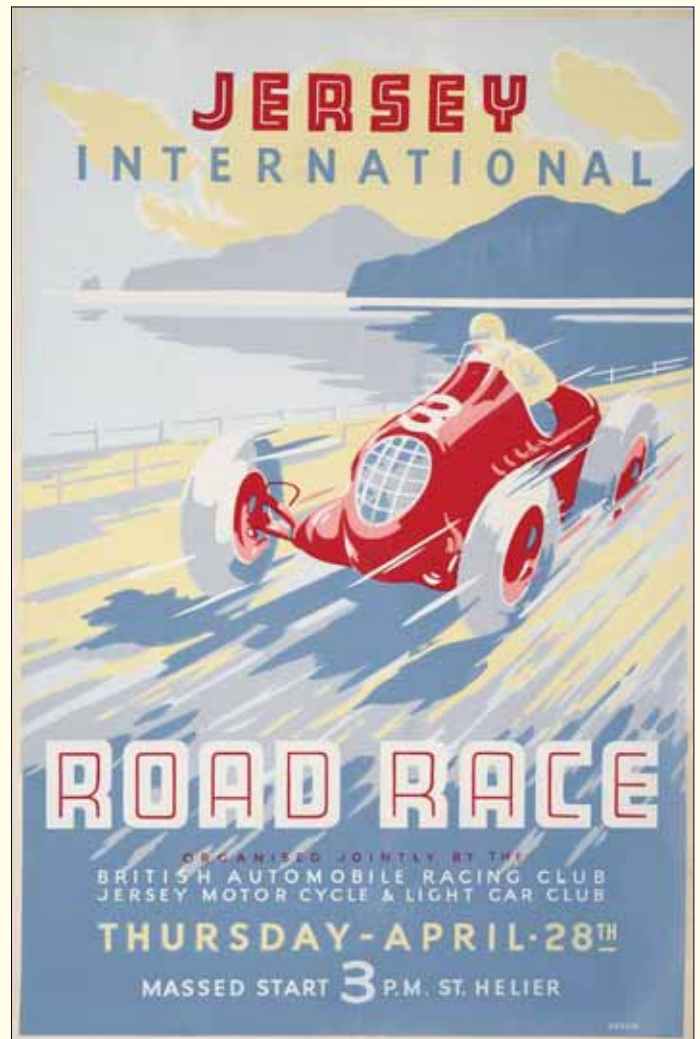
A. Fiorini: '1er Circuito Automobilistico Di Ferrara', original poster, linen mounted, dated 1949. Dimensions: 100 x 70 cm (39" x 28") Ref 3126.



Anonymous: 'XIXa Mille Miglia Coppa Franco Mazzotti', original poster, linen mounted, dated 1952. Dimensions: 96 x 64 cm (38" x 25") Ref 3124.



A. Barbieri: 'Grand Prix Dell'Autodromo, Lotteria di Monza', original poster, linen mounted, dated 1951. Dimensions: 99 x 70 cm (39" x 28") Ref 3125.



Anonymous: 'Jersey International Road Race', rare original poster, linen mounted, 1930s. Dimensions: 76 x 51 cm (30" x 20") Ref 3139.

AUTOMOBILES RICHARD-BRASIER

GAGNANTES DE LA COUPE GORDON BENNETT 1904



SOCIÉTÉ DES ANCIENS ÉTABLISSEMENTS GEORGES RICHARD
23, Avenue de la GRANDE ARMÉE PARIS

EUGÈNE VERNEAU, PARIS

Speed matters: (above) a rare surviving century-old poster evoking the Heroic Age of motor racing. Henri Bellery Desfontaine's *Art Nouveau* masterwork celebrates victory for Richard Brasier in their very first motor race, the 1904 coupe Gordon Bennett. The best of only a handful of extant examples, the finely conserved image is vividly presented in outstanding condition, dimensions: 160 x 100 cm (63" x 40") *Ref 2017*. (Below) *Pneus Jenatzy*: one of the most influential contributions to automobile poster art by Belgian maestro George Gaudy, depicting the big Mercedes of three-times Land Speed Record holder Camille Jenatzy, aka 'The Red Devil'. Size: 122 x 87 cm (48" x 34"). The early days of motor sport, thought wondrously modern, exerted a fascination on artists, sculptors and designers alike *Ref 1867*.



Smoke Signals





Pullman Collection: superbly presented line-up of antique cigar and smoking accessories that retain their select appeal, featuring crocodile cigar cases, silver cigar boxes, humidors and classic Alfred Dunhill lighters. Annabel's, the greatest nightclub in the world, is the perfect setting for these perfect *objets de luxe*. Please contact us for further information on any of the featured pieces.

Master at Work



Le Pur Sang Français: a superbly finished bronze of a thoroughbred by Herbert Haseltine (1877-1962), the work standing on a bronze socle and signed by the artist. French, dated 1914. **Height: 69 cm (27") Ref 3163.**

The pre-eminent sculptor Herbert Haseltine, Italian born son of US landscape artist William Stanley Haseltine, settled in Paris in 1905. His reputation rests securely on his highly accomplished equestrian bronzes: *Man of War*, a life-size bronze of the classic racehorse exhibited at Kentucky Horse Park, is among the best equestrian works of the last century, and his spectacular polo bronzes including *The Hurlingham Trophy*, in a class of their own. This particular bronze, bearing a strong resemblance to his 1912 work '*Ballantrae*', is indeed a distinguished rarity.



History Lesson



Race to Death: highly expressive gilded bronze in Art Nouveau style by Paul Moreau-Vauthier (1871-1936). The sculpture depicts Fernand Gabriel behind the wheel of the victorious 70hp Mors in the ill-starred 1903 Paris-Madrid. Praise for the young Gabriel's intrepid drive in the last great road race was richly deserved. Length: 19 cm (7")
Ref 2719.

Mortar remains: a rare surviving Smoker's desk companion, fashioned as an English military mortar, and an intriguing rediscovery. The ebonised and brass-mounted body comprises cigarette, cigar and match-holders, with removable ashtray to the base. Of late 19th Century manufacture, diameter: 19 cm (8") **Ref 3127**; **Emperor:** the commanding figure of Napoléon Bonaparte, caught in what Tatler call 'a characteristic pose', in formal military dress. A French 19th Century bronze, mounted on a square socle. Height: 17 cm (7"). 'Napoléon' said one of his contemporaries 'incarnates the spirit of French nationalism' **Ref 2962.**



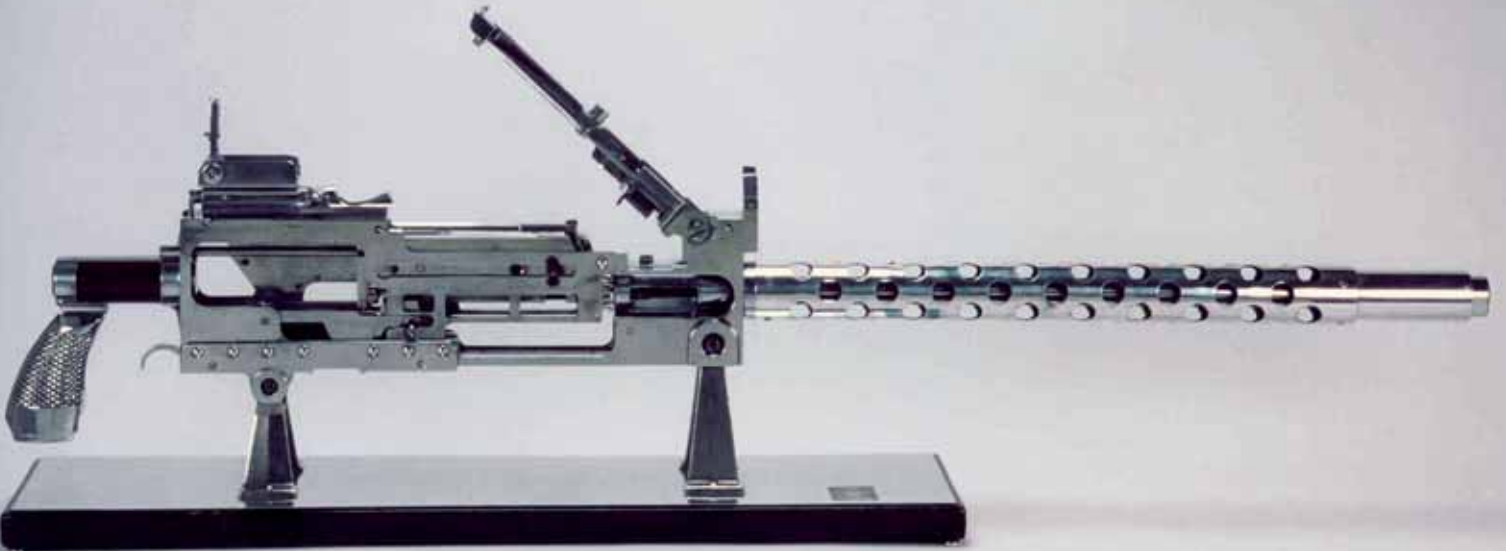
Skeleton Key



Bone appetit: a fine and rare early 19th Century bronze skeleton by Carl Kauba, (Austrian, 1865-1922). The intricately detailed figure somewhat evocative of *memento mori* sculpture designed to portray the brevity and fragility of human life. Traditionally, such works depict a skull complemented by another symbol, exemplified here by a book - almost certainly a volume of the Hippocratic Corpus - the inscribed cover in ancient Greek script. Hippocrates II of Kos was one of the great men in antiquity, best known as 'The Father of Medicine'. Of course, the lasting embodiment of man meditating on a skull was provided in Shakespeare's *Hamlet*, his protagonist contemplating the skull of deceased court jester, Yorick. Viennese sculptor Carl Kauba created a lifetime's worth of memorable statuary, and is equally celebrated for his American Wild West subjects, c.1910. **Height: 48 cm (18") Ref 3166.**



Big Guns



(From top) **Top Gun:** a rare model of the M1 Garand combat rifle, double life-size, and constructed exclusively for training purposes by Springfield Armory, Massachusetts, c.1936. The model, of polished steel and ebony hardwood construction, mounted on a tailor-made display base. John Cantius Garand (1888-1974) invented the first semi-automatic infantry weapon used in active military service. His low recoil .30 calibre, eight-shot, slip-loading M1, delivering the requisite firepower, was the ideal weapon for the average soldier. Manufacture of the official US Army rifle started in 1936, and the M1 saw service in the Allied victory in the Second World War, Korea, Indo-China and elsewhere. The M1 performed, quoting General McArthur, 'without malfunctions under combat conditions as much as seven days consecutively without attention'.

Length overall: 221 cm (87") Ref 2806.

Browning version: rare double-life-size instruction model of a Browning A4 machine gun, assembled to the identical specification of the original, and dating from the 1930s. Fully restored, and retaining the weapon's original aluminium and steel finish. Highly effective, Browning's multi-purpose, rapid fire A4, introduced in 1919, was built for the US military training program and remained in service until superseded by the A6. **Length: 198 cm (78") Ref 2273.**

Target practice: a rarely found double life-size model of the Browning semi-automatic rifle, manufactured to the order of the US military and employed in a training role. A pristine restored example, authentically replicating the standard issue semi-automatic, complete with several rounds of dummy ammunition, and finished in original steel and aluminium. The rifle rests on a specially designed display stand of ebonised timber and aluminium. **Length: 243 cm (96") Ref 2332.**

Flash Point



Sky High: authentic Sky Flash solid propulsion missile in fully de-activated form. First introduced by British Aerospace Defence in 1976, the medium range air-to-air missile was equipped with an Active Sky Flash warhead, launched from wing rail pylons. Marconi supplied the monopulse guidance system for the jet-powered missile, capable of reaching a staggering speed of Mach 4.0 over a range of 45 kilometres. Sky Flash, sold for £250,000 apiece, was deployed by the RAF, and the air forces of Italy, Oman, Sweden and Saudi Arabia. The Tornado, F-4 Phantom, F-16, Viggen and Hawk 200 fighters all provided a platform for Sky Flash. A unique decommissioned example, mounted on a specially designed display stand. British, c.1976. Length: 3.66m (144") Ref 2345.

Cubbable

A Russian tradition: a seated Russian black bear cub of the finest quality from Rénée Rochard (1906-1984). Of 1920s origin, and bearing French foundry mark *I.ROCHARD* to the base.

Height overall: 49 cm (19")

Ref 3145.



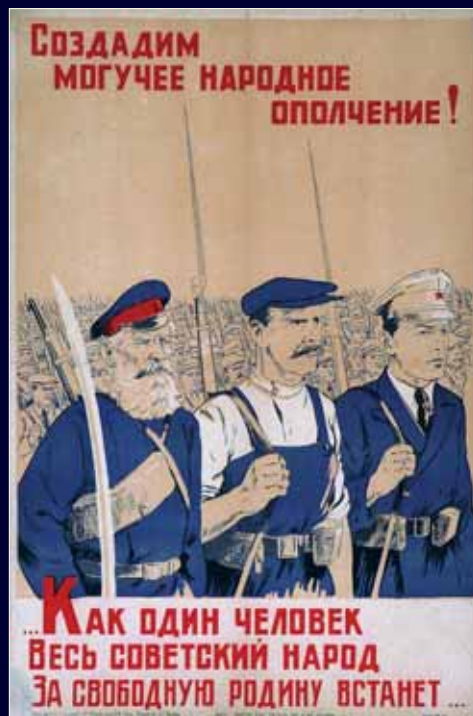
Master of the Artic Ice: a fine bronze example of François Pompon's powerful Art Deco masterwork *Ours Blanc* (Polar Bear), cast in 1937. Pompon (1855-1933), a highly acclaimed animal sculptor, lived most of his life in his birthplace Burgundy, and the museum dedicated to his memory is the chief attraction in the small town of Saulieu. The original sculpture, carved during Pompon's time as assistant to Rodin, progenitor of modern sculpture, was first exhibited at the 1922 *Salon d'Autonne*, Paris.

The monumental marble is now housed in the Musée d'Orsay.

Length: 45 cm (18") Ref 3162.



A Russian Revelation



Soviet era: powerful on message WWII Communist propaganda posters, depicting comrades in their 'heroic' struggle against the rising tide of Fascism. (From top, reading in translation): "The more metal we have the more arms we can make," original poster, linen mounted, size 89 x 59 cm (35" x 23") Ref 3094; (above, from left) "Let us make more tanks, Anti-tank arms and shells, planes, cannons, mines, machine-guns, missiles, and rifles. All for the front! All for Victory!" original poster, linen mounted, size 89 x 59 cm (35" X 23") Ref 3087; "As one man, the whole Soviet Nation will rise up for a free Fatherland", original poster, linen mounted, size 59 x 41 cm (23" x 16") Ref 3082; "Fascism is the most evil enemy of Women. All together in the fight against Fascism", original poster, linen mounted, size 89 x 59 cm (35" x 23") Ref 3092.



Strings attached: superlative *Art Deco* piano, known fittingly, as a 'boudoir grand', by J. Strohmenger and Sons. The *demi-lune* case finished in bird's-eye maple wood, with distinctive triple-pedestal base a feature. One of the last to be produced by the long-established maker (founded 1835), before the take-over of the London firm by Chappell. Dated 1938, frame number 20670. Width: 145 cm (57"). Completely restored and finely tuned **Ref 2419**.